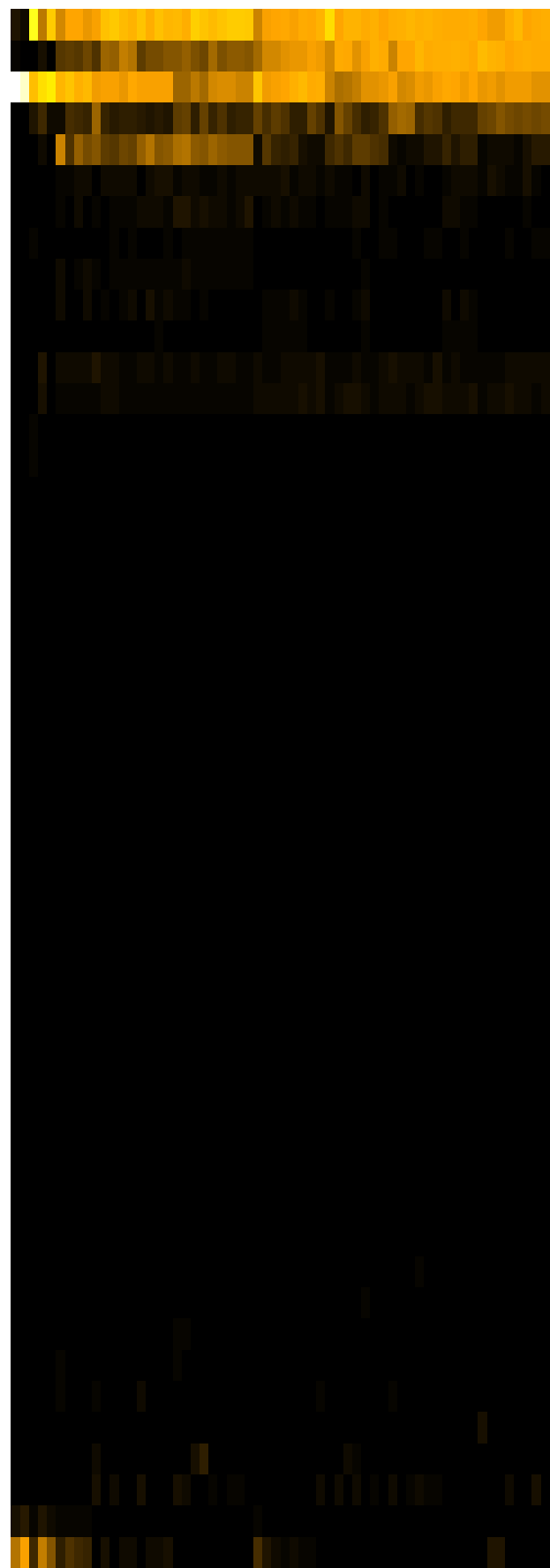
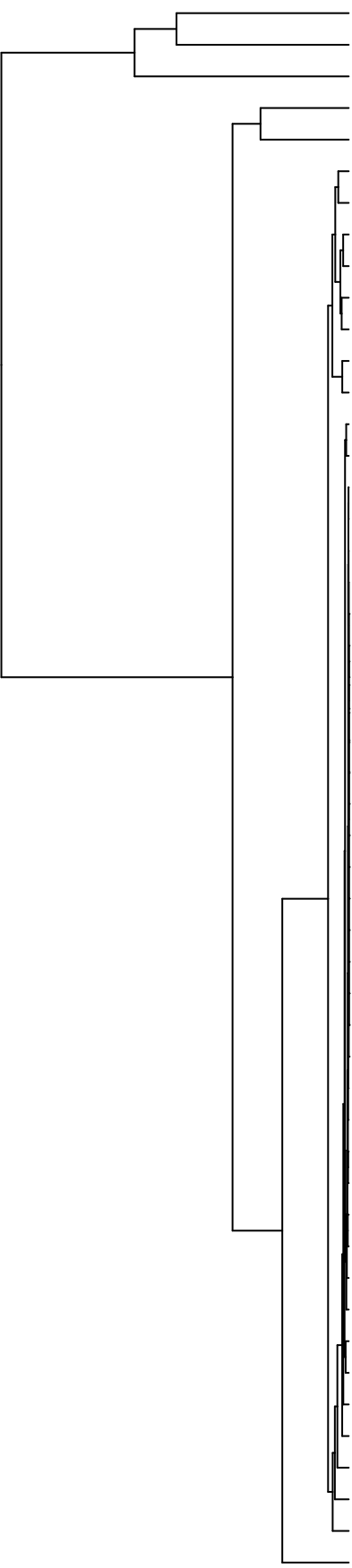


Group006
 A Final -PMA
 F Final -PMA



- Veillonella
- Haemophilus
- Streptococcus
- Neisseria
- Fusobacterium
- Aggregatibacter
- Campylobacter
- Schaalia
- Leptotrichia
- Prevotella
- Porphyromonas
- Granulicatella
- Eikenella
- Rothia
- Actinomyces
- Lancefieldella
- Saccharibacteria_(TM7)_[G-6]
- Staphylococcus
- Lautropia
- Capnocytophaga
- Cutibacterium
- Acinetobacter
- Acidovorax
- Lachnospiraceae_[G-2]
- Novosphingobium
- Leifsonia
- Agrobacterium
- Phyllobacterium
- Sphingobium
- Riemerella
- Absconditabacteria_(SR1)_[G-1]
- Microbacterium
- Siccationidurans
- Saccharibacteria_(TM7)_[G-5]
- Delftia
- Alloprevotella
- Saccharibacteria_(TM7)_[G-1]
- Oribacterium
- Solobacterium
- Lachnoanaerobaculum
- Pseudomonas
- Stomatobaculum
- Gemella
- Catonella
- Raoultella
- Serratia
- Enterobacter
- Klebsiella
- Salmonella
- Citrobacter

- F28914.S396
- F28914.S393
- F28914.S394
- F28914.S433
- F28914.S436
- F28914.S399
- F28914.S400
- F28914.S554
- F28914.S438
- F28914.S556
- F28914.S558
- F28914.S559
- F28914.S596
- F28914.S557
- F28914.S115
- F28914.S113
- F28914.S076
- F28914.S275
- F28914.S235
- F28914.S234
- F28914.S239
- F28914.S280
- F28914.S277
- F28914.S240
- F28914.S078
- F28914.S120
- F28914.S073
- F28914.S117
- F28914.S273
- F28914.S238

Samples

Genus